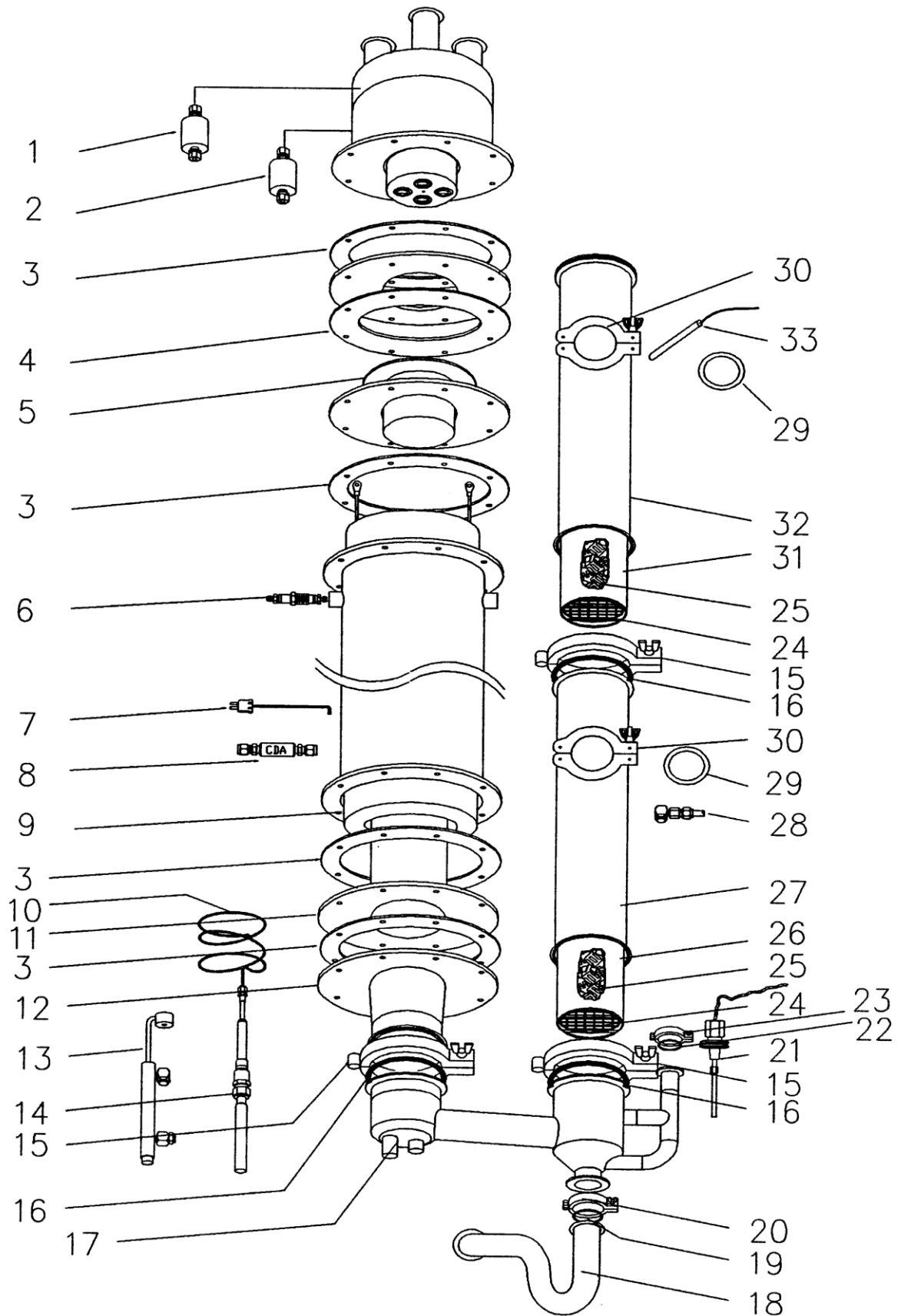


CDO 857 Parts



ITEM	DESCRIPTION	QTY	PART NUMBER
1	NITROGEN FLOW SENSOR SWITCH	1	113-02-001
2	AIR FLOW SENSOR/SWITCH	1	111-50-001
3	FLANGE GASKETS	4	513-57-001
4	INCONEL FLANGE GASKETS	1	513-57-002
5	SLIP FIT SLEEVE	1	422-57-022
6	HEATER POWER FEED THROUGH	2	163-06-002
7	CONTROL THERMOCOUPLE	1	162-02-008
8	ORIFICE/FILTER	1	525-02-006
9	HEATER ELEMENT	1	165-57-001
10	THERMAL REACTION CHAMBER CLEANING MECHANISM COIL	1	424-60-001
11	INCONEL LINER	1	423-57-003
12	PRIMARY COOLING INLET	1	422-57-008
13	PRIMARY COOLING/SCRUBBING NOZZLE ASSEMBLY	1	751-02-017
14	THERMAL REACTION CHAMBER CLEANING MECHANISM CYLINDER ASSEMBLY	1	811-03-001
15	QUICK DISCONNECT CLAMP	1	548-64-002
16	COOLING/SCRUBBING CHAMBER O'RING	2	515-64-001
17	COOLING/SCRUBBING TRANSITION SECTION	1	422-57-003
18	DRAIN "P" TRAP	1	422-57-012
19	KF40 CENTERING O'RING	1	511-24-001
20	KF40 CLAMP	1	548-24-001
21	CONDUCTIVITY LIQUID LEVEL SENSOR	1	811-05-001
22	KF25 CENTERING O'RING	1	548-16-002
23	KF25 CLAMP	1	548-24-100
24	DEMISTER SCREEN	1	422-57-020
25	SECONDARY SCRUBBER PACKING (0.168 CU.FT.)	1	753-12-001
26	LOWER PACKING CARTRIDGE	1	422-04-002
27	LOWER SECONDARY SCRUBBING TOWER	1	422-54-004
28	SECONDARY COOLING/SCRUBBING SPRAY NOZZLE	1	751-02-006
29	KF50 CENTERING O'RING	1	548-32-003
30	KF50 QUICK DISCONNECT CLAMP	1	548-32-001
31	HALAR-COATED DEMISTER CARTRIDGE	1	425-57-010
32	HALAR-COATED DEMISTER TOWER	1	425-57-004
33	RTD PROBE	1	162-02-004

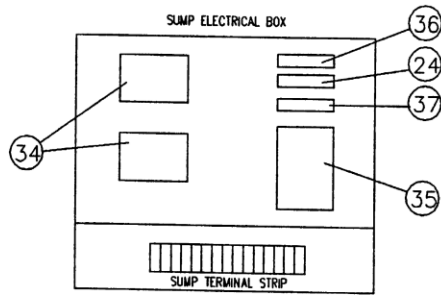
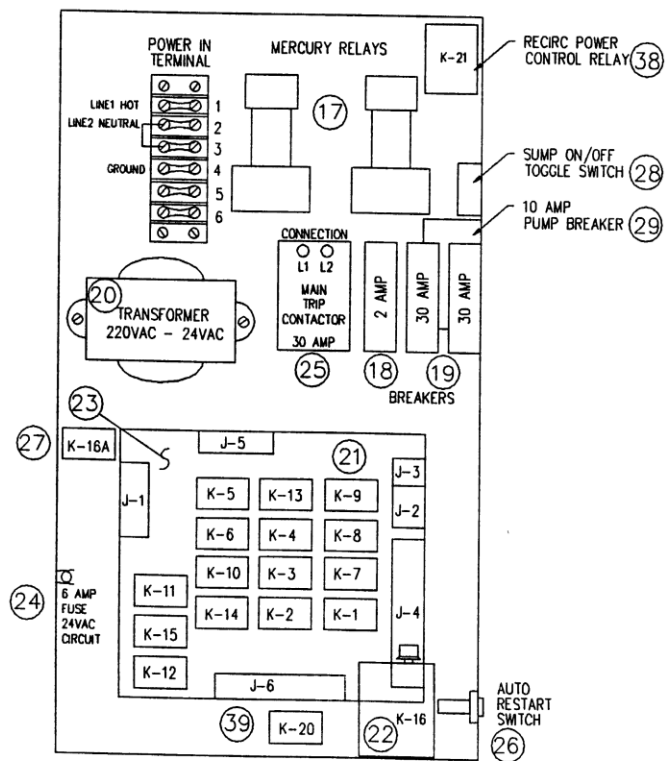
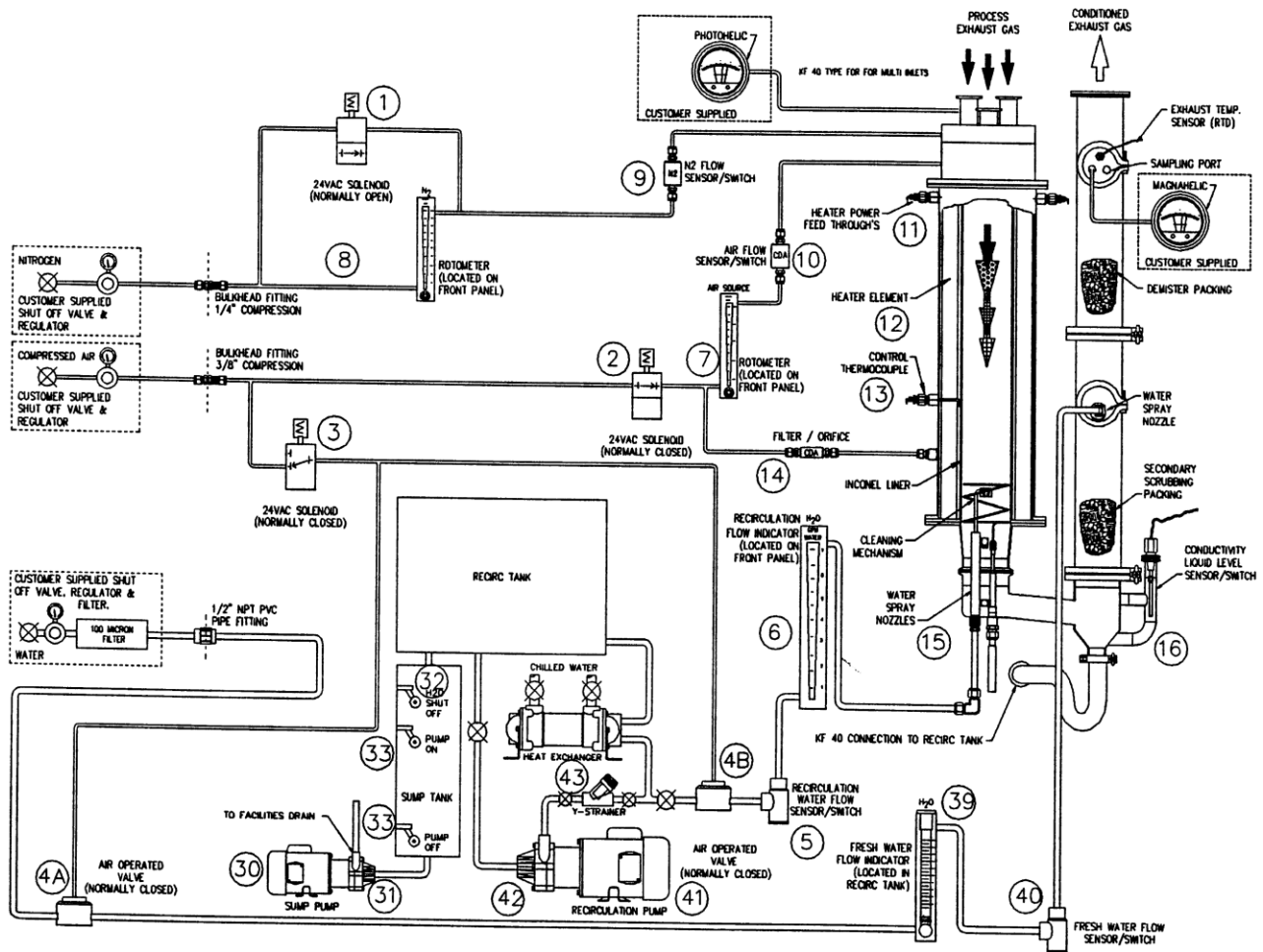


FIGURE 15
OTHER CDO™ PARTS

ITEM	DESCRIPTION	PART NUMBER
1	SOLENOID 24V N/O (NITROGEN)	151-02-002
2	SOLENOID 24V N/C (CDA - OXYGEN SOURCE)	151-24-003
3	SOLENOID 24V N/C (AIR ACTUATES WATER)	151-24-004
4	AIR OPERATED N/C WATER VALVE	215-08-003
5	WATER FLOW SENSOR/SWITCH	113-08-004
6	WATER FLOW INDICATOR	532-02-008
7	AIR ROTOMETER	531-10-001
8	NITROGEN ROTOMETER	533-50-001
9	NITROGEN FLOW SENSOR/SWITCH	113-02-001
10	AIR FLOW SENSOR/SWITCH	111-50-001
11	HEATER POWER FEED THROUGH	163-57-001
12	HEATER ELEMENT	165-57-001
13	CONTROL THERMOCOUPLE	162-02-002
14	ORIFICE/FILTER	525-02-006
15	PRIMARY COOLING/SCRUBBING NOZZLE ASSY.	751-02-017
16	CONDUCTIVITY LIQUID LEVEL SENSOR	116-02-001
17	MERCURY RELAY	133-24-001
18	BREAKER 2 AMP	114-02-001
19	BREAKER 30 AMP	114-30-001
20	TRANSFORMER 220/24	182-28-001
21	*RELAY	137-24-001
22	WATER TIME DELAY RELAY	132-22-003
23	SYSTEM OPERATING PCB WITH RELAYS	811-15-001
24	24 VAC CIRCUIT 6 AMP FUSE	125-06-001
25	MAIN TRIP CONTACTOR (30 AMP RELAY)	115-32-001
26	AUTO-RESTART SWITCH	112-24-003
27	AUTO-RESTART TIME DELAY RELAY	132-24-001
28	SUMP BYPASS ON/OFF TOGGLE SWITCH	112-11-002
29	15 AMP PUMP BREAKER	114-15-001
30	SUMP PUMP MOTOR	152-16-012
31	SUMP PUMP HEAD	152-16-015
32	N/C SONIC LIQUID LEVEL SENSOR	116-12-001
33	N/O SONIC LIQUID LEVEL SENSOR	116-12-002
34	#KUMP-11A1B-120 120VAC RELAY	135-22-001
35	KHU-17A11-120VAC RELAY	135-42-001
36	0.5 AMP FUSE	125-05-001
37	15 AMP FUSE	125-15-001
38	RECIRC POWER CONTROL RELAY	135-12-001
39	EPO CONTROL RELAY	133-42-001
40	FRESH WATER FLOW SENSOR/SWITCH	113-08-002
41	AIR OPERATED VALVE	215-08-003
42	RECIRCULATION PUMP	152-24-001

Document Name	Issue Date	Revision	Authorized Initials	Page
857rs.doc	10/06/94	"R"		