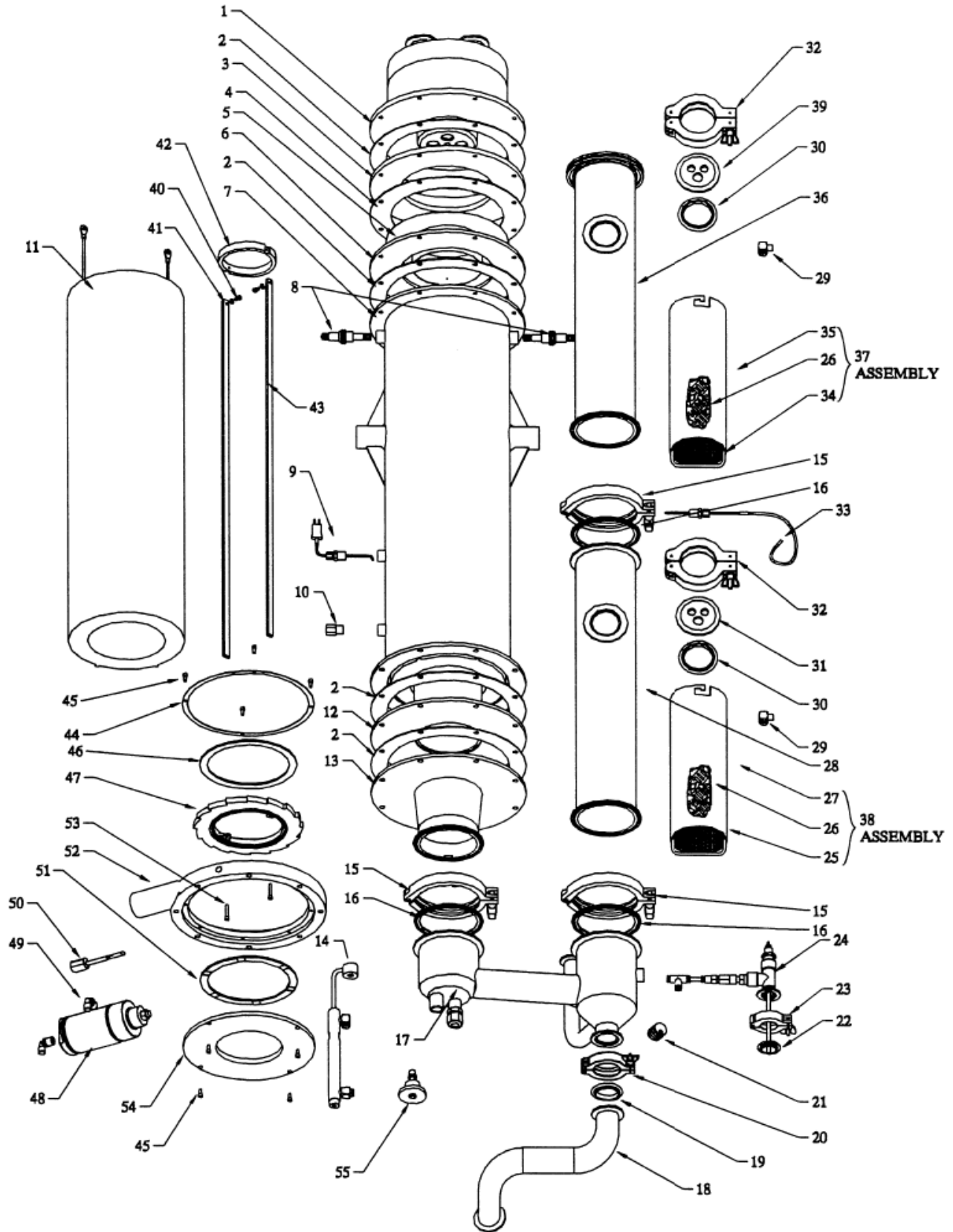
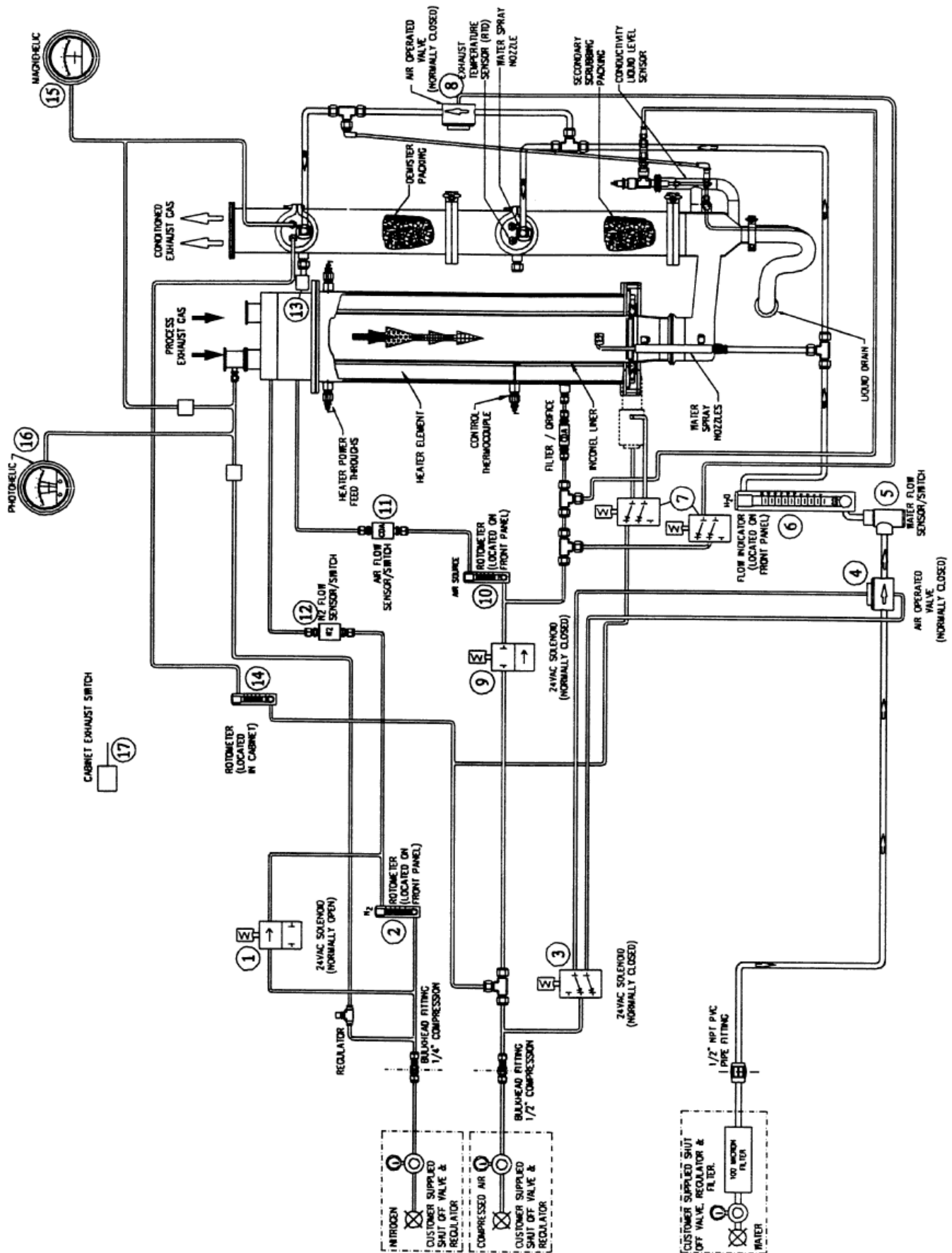


# CDO 858 Parts



ITEM	DESCRIPTION	QTY	PART NUMBER	*S/C
1a	858 SINGLE NOZZLE ASSEMBLY	1	814-01-003	
1b	858 DUAL NOZZLE ASSEMBLY	1	814-01-004	
1c	858 TRIPLE NOZZLE ASSEMBLY	1	814-01-005	
1d	858 MULTI NOZZLE ASSEMBLY	1	814-01-006	
2	FLANGE GASKETS	4	513-57-001	S
3	SLIP FIT SPACER	1	428-57-004	
4	INCONEL FLANGE GASKETS	1	513-57-002	S
5	SLIP FIT SLEEVE	1	422-57-022	C
6	SLIP FIT FLANGE	1	428-57-003	
7	BODY TUBE	1	422-57-002	
8	HEATER POWER FEED THROUGH (858) ASSEMBLY	2	811-02-004	S
9	CONTROL THERMOCOUPLE (858)	1	162-02-008	C
10	ORIFICE, .012 1/8" NPT MALE X FEMALE	1	535-02-003	S
11	HEATER ELEMENT ASSEMBLY	1	811-57-006	S
12	INCONEL LINER	1	423-57-003	S
13	PRIMARY COOLING INLET	1	422-57-008	S
14	PRIMARY COOLING/SCRUBBING RECIRC ASSEMBLY	1	751-02-016	S
15	TRI CLOVER CLAMP	3	548-64-002	
16	SCRUBBING TOWER 4" O'RING	3	513-64-001	S
17	COOLING/SCRUBBING TRANSITION SECTION	1	422-57-003	S
18	SLOPE DRAIN	1	-----	S
19	KF40 CENTERING O'RING	3	511-24-001	
20	KF40 CLAMP	3	548-24-001	
21	CONDUCTIVITY PURGE PLUG	1	421-14-001	S
22	KF25 CENTERING O'RING	1	548-16-002	S
23	KF25 CLAMP	1	548-16-001	
24	CONDUCTIVITY LIQUID LEVEL SENSOR ASSEMBLY	1	811-03-010	S
25	DEMISTER SCREEN FOR STAINLESS CARTRIDGE	1	422-57-020	C
26	SECONDARY SCRUBBER PACKING (0.168 CU. FT.)	2	753-12-001	
27	LOWER PACKING CARTRIDGE STAINLESS STEEL	1	422-04-002	
28	LOWER SECONDARY SCRUBBING TOWER	1	422-57-004	
29	SECONDARY COOLING/SCRUBBING SPRAY NOZZLE	2	751-02-006	S
30	KF50 CENTERING O'RING	2	548-32-003	C
31	KF50 FLANGE ASSEMBLY LOWER WITH TANK	1	814-06-009	
32	KF50 QUICK DISCONNECT CLAMP	2	548-32-001	
33	RTD PROBE WITH FITTING	1	811-02-005	S
34	DEMISTER SCREEN FOR HALAR CARTRIDGE	1	422-57-026	C
35	HALAR-COATED DEMISTER CARTRIDGE	1	425-57-010	

ITEM	DESCRIPTION	QTY	PART NUMBER	*S/C
36	HALAR COATED TOWER DEMISTER MF 100	1	425-57-004	
37	HALAR CARTRIDGE ASSEMBLY	1	814-06-007	
38	STAINLESS STEEL CARTRIDGE ASSEMBLY	1	814-06-002	
39	KF50 FLANGE ASSEMBLY UPPER	1	814-06-008	
40	BOLT, 8-32 X 1/4 TITANIUM	2	542-06-006	
41	WASHER, #8 LOCK TITANIUM	4	543-08-005	
42	BRACKET, UPPER SUPPORT	1	422-58-001	
43	BLADE, CLEANING	1	422-58-002	
44	FLANGE, PLATE	1	422-58-006	
45	SCREW, 8-32 X 3/8	8	542-06-005	
46	BEARING, TEFLON UPPER	1	421-58-001	
47	GEAR, CLEANING MECHANISM	1	422-58-004	
48	CYLINDER, 2" DBL ACTING	1	553-32-001	
49	ELBOW, 1/4 x 1/4 MALE	2	581-04-008	
50	PUSHROD ASSEMBLY	1	813-59-003	
51	BEARING, TEFLON LOWER	1	421-58-002	
52	FLANGE, HOUSING	1	422-58-007	
53	BOLT, 8-32 X 1 TITANIUM	2	542-16-007	
54	FLANGE, PLATE	1	422-58-006	
55	SWITCH LIQUID LEVEL	2	116-08-001	



ITEM	DESCRIPTION	QTY	PART NUMBER
1	SOLENOID 24V N/O (NITROGEN)	1	151-02-002
2	NITROGEN ROTOMETER	1	533-50-001
3	SOLENOID 24V N/C (AIR ACTUATES WATER)	1	151-10-001
4	DUAL AIR OPERATED WATER VALVE	1	215-08-003
5	WATER FLOW SENSOR/SWITCH ASSEMBLY	1	812-16-002
6	WATER FLOW INDICATOR	1	532-02-001
7	SOLENOID 24V VOLT 4 WAY	2	151-10-001
8	DEMISTER WASHING SYSTEM N.C. AIR-OPERATED VALVE	1	215-08-004
9	SOLENOID 24V N/C (CDA-OXYGEN SOURCE)	1	151-24-003
10	AIR ROTOMETER	1	531-10-001
11	AIR FLOW SENSOR/SWITCH	1	111-50-001
12a	NITROGEN FLOW SENSOR/SWITCH FOR TRIPLE & MULTI NOZZLE	1	113-20-001
12b	NITROGEN FLOW SENSOR/SWITCH FOR SINGLE & DUAL NOZZLE	1	113-02-001
13	SENSOR, EXHAUST TEMP. 50° C	1	162-06-003
14	EMCS CDA FLOWMETER (30-240 SLM)	1	531-10-004
15	MAGNEHELIC® 2 TO -2	1	551-40-005
16	PHOTOHELIC®	1	111-22-001
17	SWITCH, LOW VELOCITY AIRFLOW	1	113-34-001