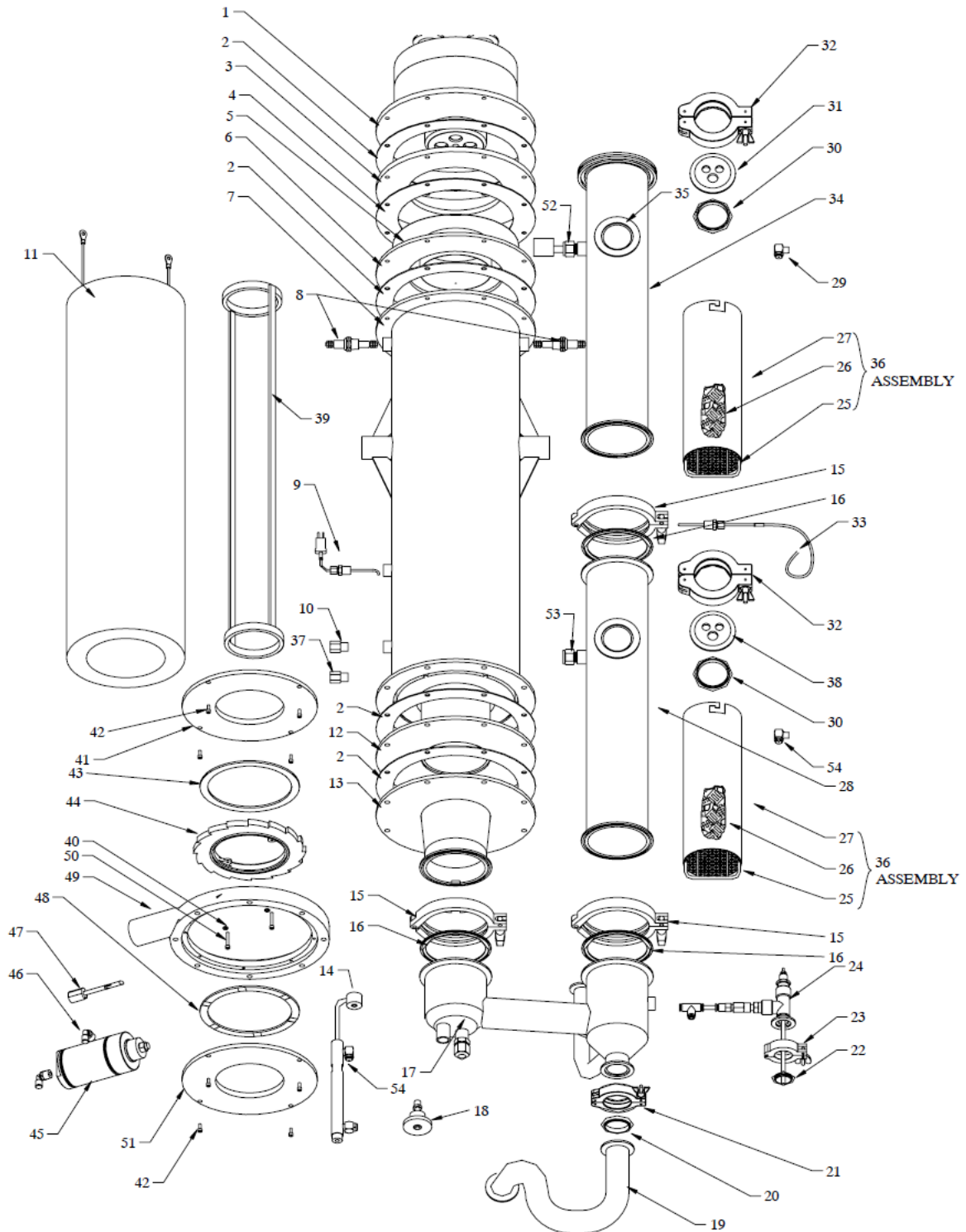


CDO 859 Parts



Item	Description	Qty	Part #	Replacement Interval	Stocking Ratio*
1. a	859 DUAL NOZZLE ASSEMBLY	1	814-01-013		
1. b	859 MULTI NOZZLE ASSEMBLY	1	814-01-014		
2.	FLANGE GASKETS	4	513-57-001	18 mo.	
3.	SLIP FIT SPACER	1	428-57-004		
4.	INCONEL FLANGE GASKETS	1	513-57-002	18 mo.	
5.	SLIP FIT SLEEVE	1	422-57-022	18 mo.	
6.	SLIP FIT FLANGE	1	428-57-003		
7.	BODY TUBE	1	422-57-002		
8.	HEATER POWER FEED THROUGH ASSY	2	811-02-004	18 mo.	
9.	CONTROL THERMOCOUPLE DUAL	1	162-02-009	6 mo.	
10.	ORIFICE, .012 1/8" NPT FEMALE X MALE	1	535-02-003		
11.	HEATER ELEMENT ASSEMBLY	1	811-57-006	18 mo.	
12.	INCONEL LINER	1	423-57-003		1:20
13.	PRIMARY COOLING INLET SHORTEND	1	422-64-002		
14.	U-JET ASSEMBLY	1	751-02-017		1:10
15.	TRI CLOVER CLAMP	3	548-64-002		
16.	SCRUBBING TOWER 4" O'RING	3	513-64-001	6 mo.	
17.	COOLING/SCRUB TRANSITION SEC. PFA	1	811-03-015		1:20
18.	SWITCH LIQUID LEVEL	2	116-02-002		
19.	P-TRAP DRAIN	1	422-57-012		
20.	KF40 CENTERING O'RING	1	511-24-001	6 mo.	
21.	KF40 CLAMP	1	548-24-001		
22.	KF25 CENTERING O'RING	1	548-16-002	6 mo.	
23.	KF25 CLAMP	1	548-16-001		
24.	CONDUCTIVITY LL SENSOR ASSY	1	811-05-001		
25.	DEMISTER SCREEN 3 5/8" (PFA)	2	425-58-005	12 mo.	
26.	SECONDARY SCRUBBER PACKING	0.10	753-12-001	12 mo.	
27.	LOWER PACKING CARTRIDGE SS (PFA)	2	425-58-004		
28.	LOWER SECONDARY SCRUBBING TOWER (PFA)	1	425-58-003		
29.	SECONDARY COOLING/SCRUBBING SPRAY NOZZLE	2	751-02-006		
30.	KF50 CENTERING O'RING	2	548-32-003	6 mo.	
31.	KF50 FLANGE UPPER ASSEMBLY	1	814-06-015		
32.	KF50 QUICK DISCONNECT CLAMP	2	548-32-001		

Item	Description	Qty	Part #	Replacement Interval	Stocking Ratio*
33.	RTD PROBE WITH FITTING	1	811-02-005		
34.	PFA COATED TOWER DEMISTER MF 100	1	425-58-007		
35.	PFA COATED NPT FLANGE	2	425-59-001		
36.	PFA CARTRIDGE ASSEMBLY	2	814-06-011		
37.	ORIFICE, .070 1/8 NPT	1	535-02-022		
38.	KF50 FLANGE ASSEMBLY LOWER	1	814-06-009		
39.	BLADE RCCM WELD W/FASTENERS	1	423-59-001		
40.	WASHER, #8 LOCK TITANIUM	2	543-08-005		2:4
41.	FLANGE, PLATE	1	422-58-006		
42.	SCREW, 8-32 X 3/8	8	542-06-005		8:4
43.	BEARING, TEFLON UPPER	1	421-58-001	18 mo.	
44.	GEAR, CLEANING MECHANISM	1	422-58-004		
45.	CYLINDER, 2 ² DBL ACTING	1	553-32-001		
46.	ELBOW, 1/4 x 1/4 MALE	2	581-04-008		
47.	PUSHROD ASSEMBLY	1	813-59-003		1:10
48.	BEARING, TEFLON LOWER	1	421-58-002	18 mo.	
49.	FLANGE, HOUSING	1	422-58-007		
50.	BOLT, 8-32 X 1/2 TITANIUM	2	542-08-012		2:4
51.	FLANGE, PLATE	1	422-58-006		
52.	SENSOR, EXH. TEMP 50 DEGREE C	1	811-08-001		
53.	CONNECTOR 5/8 X 1/2 MALE NPT	1	525-10-003		

Item	Description	Qty	Part #	Stocking Ratio*
1.	REGULATOR 5 PSI PRESET	1	552-02-011	
2.	SOLENOID 24V N/O (NITROGEN)	1	151-02-002	
3.	ORIFICE 0.035	1	535-02-023	
4.	NITROGEN ROTOMETER	1	533-50-001	
5.	SOLENOID 24V N/C	1	151-24-018	
6.	SOLENOID 24V VOLT 4 WAY	3	151-10-001	
7.	FRESH WATER FLOW SWITCH	1	113-08-003	1:25
8.	DUAL AIR OPERATED VALVE	1	215-08-003	1:20
9.	FRESH WATER FLOW INDICATOR	1	532-04-001	
10.	ORIFICE 0.070	2	535-02-022	
11.	ORIFICE 0.012	2	535-02-003	
12.	AIR ROTOMETER 858-02	1	531-10-001	
13.	AIR FLOW SENSOR/SWITCH 60-6	2	111-50-001	
14.a	NITROGEN SENSOR/SWITCH FOR MULTI NOZZLE	1	113-20-001	
14.b.	NITROGEN SENSOR/SWITCH 1&2 NOZZLE	1	113-02-001	
15.	ORIFICE 0.003	2	535-02-001	
16.	MAGNEHELIC 2 TO -2 ²	2	551-40-005	
17.	SWITCH PRESSURE PRESET 2.0 WC	1	117-02-001	
18.	SWITCH PRESSURE PRESET .4-.6" WC	1	113-08-006	
19.	AIR OPERATED VALVE N/C WATER VALVE	1	215-08-004	
20.	SOLENOID 24V N/C (CDA-OXYGEN SOURCE)	1	151-24-003	